



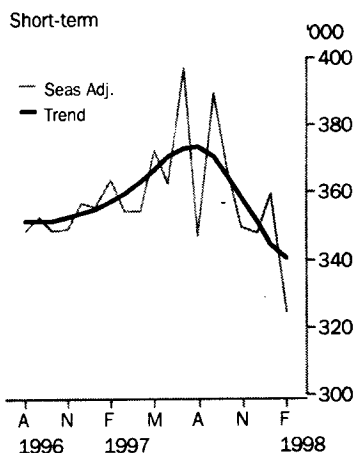
Australian Bureau of Statistics

OVERSEAS ARRIVALS AND DEPARTURES

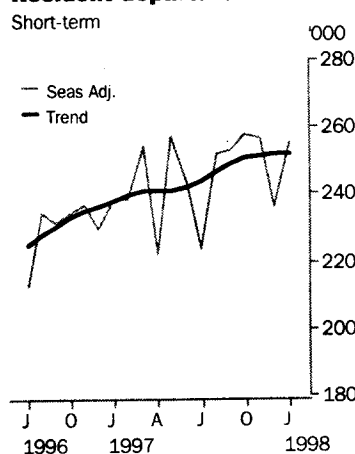
AUSTRALIA

EMBARGO: 11:30AM (CANBERRA TIME) FRI 3 APR 1998

Visitor arrivals



Resident departures



FEBRUARY 1998 PRELIMINARY

	Feb 98 '000s	% change between Jan 98 and Feb 98	Jul 97 to Feb 98 '000s	% change on previous corresponding period
Short-term				
Visitor arrivals				
Trend	340.4	-1.2
Original	352.7	..	2,951.9	0.5

JANUARY 1998 KEY FIGURES

	Jan 98 '000	% change between Dec 97 and Jan 98	Jul 97 to Jan 98 '000	% change on previous corresponding period
Short-term				
Visitor arrivals				
Trend	344.7	-2.0
Original	346.2	..	2 599.2	2.7
Resident departures				
Trend	252.1	0.1
Original	207.3	..	1 770.9	6.5
Permanent(a)				
Arrivals	7.0	..	45.2	-14.7
Departures	3.3	..	17.9	4.8
Total permanent & long-term(a)				
Arrivals	30.0	..	158.0	-0.5
Departures	20.8	..	111.8	12.0

(a) Original

KEY POINTS

SHORT-TERM

- The trend estimate decreased in February 1998 by 1.2% from January 1998. The trend has fallen 9% since the peak in August 1997.

PERMANENT AND LONG-TERM

- There were 158,000 permanent and long-term arrivals to Australia and 111,800 departures during the seven months to January 1998. The net gain of arrivals over departures for the seven months to January 1998 was 46,200, 22% lower than the net gain recorded for the corresponding seven months to January 1997.

INQUIRIES

- For further information about these and related statistics, contact Client Services on 02 6252 6627, or any ABS Office.

NOTES

FORTHCOMING ISSUES

ISSUE

EXPECTED RELEASE DATE

March 1998

28 April 1998

.....

TREND REVISIONS

Each time new seasonally adjusted estimates become available, trend estimates of short-term arrivals and departures are revised (see paragraph 19 of the Explanatory Notes).

The examples in the graphs below show two illustrative scenarios and the consequent revisions to previous trend estimates of visitor arrivals and resident departures.

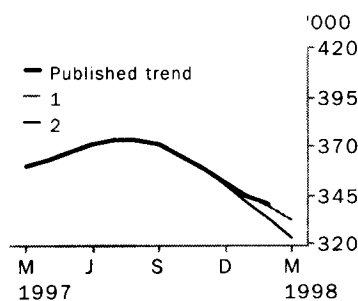
1 The seasonally adjusted estimate for:

- March visitor arrivals is 3.39% higher than February
- February resident departures is 4.82% higher than January

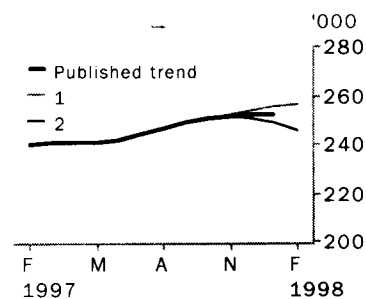
2 The seasonally adjusted estimate for:

- March visitor arrivals is 3.39% lower than February
- February resident departure is 4.82% lower than January

VISITOR ARRIVALS



RESIDENT DEPARTURES



The percentage changes of 3.39% and 4.82% were chosen because they represent the average absolute monthly percentage changes between months for visitor arrivals and resident departures respectively over the last four years.

W. McLennan
Australian Statistician

ANALYSES AND COMMENTS

SHORT-TERM MOVEMENTS

VISITOR ARRIVALS

There were an estimated 352,700 visitor arrivals to Australia during February 1998, bringing the total number for the eight months to February 1998 to an estimated 2,951,900, an increase of 0.5% over the number of overseas visitors arriving during the previous July to February period (2,938,600).

The major source countries of visitor arrivals to Australia during the eight months to February 1998 were Japan (19% of all visitor arrivals), New Zealand (16%), the United Kingdom (10%), the United States of America (8%) and Singapore (6%). Of the top ten source countries of visitors to Australia, Korea and Indonesia were the only countries which experienced a decreases (by 32% and 17% respectively) between the eight months to February 1998 and the corresponding period to February 1997.

RESIDENT DEPARTURES

There were 207,300 short-term departures of Australian residents in January 1998, bringing the total for the seven months to January 1998 to 1,770,900, an increase of 7% on the same period the previous year (1,662,400). The main destinations of Australian residents departing during this period were New Zealand (14%), the United States of America (12%), Indonesia (11%), the United Kingdom (10%) and Hong Kong (5%).

During the seven months to January 1998:

251,000 Australian residents mainly visited New Zealand, a decrease of 0.2% compared to the seven months to January 1997;

214,800 residents mainly visited the United States of America, an increase of 7%;

180,500 residents mainly visited the United Kingdom, an increase of 12%;

200,400 residents mainly visited Indonesia, an increase of 18%; and

81,100 residents mainly visited Hong Kong, a decrease of 21%.

PURPOSE OF JOURNEY

Over half (58%) of all short-term visitors to Australia during the seven months to January 1998 stated on arrival that they had come here for a holiday (1,509,400). A further 20% stated that they were visiting friends/relatives (524,100), 10% were on business trips (251,600), while 3% arrived for educational purposes (78,500) and 2% arrived for a convention or conference (63,000).

STATE OF STAY

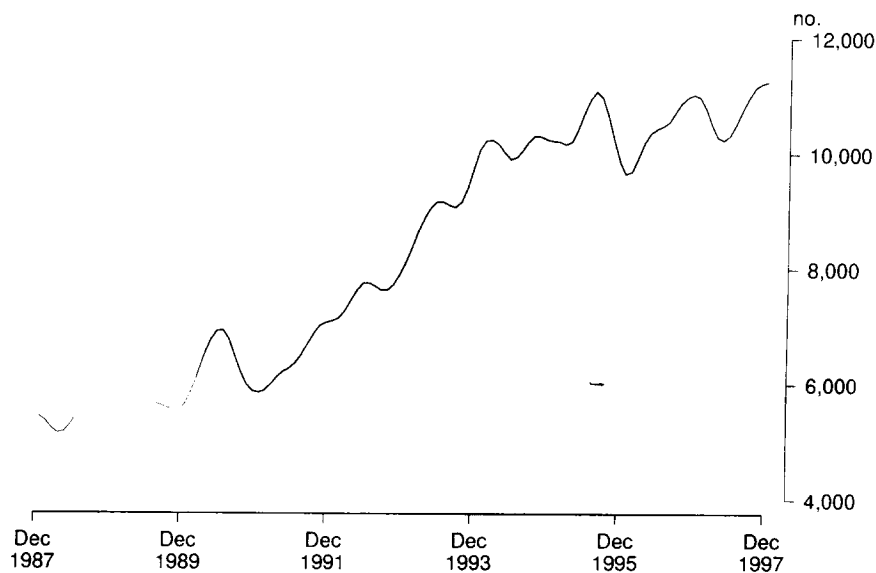
Overseas visitors departing Australia between July 1997 and January 1998 stated that they had spent most of their time in New South Wales (42%), Queensland (30%), Victoria (14%) or Western Australia (9%). Victoria, South Australia and Tasmania experienced the largest increases in visitors (up by 9%), followed by Western Australia and the Northern Territory (both up by 6%). New South Wales decreased marginally.

ANALYSES AND COMMENTS

GERMAN RESIDENTS: VISITOR ARRIVALS

In 1997 short-term visitors who arrived in Australia from Germany represented 3% of all short-term visitor arrivals. This proportion was the same in both 1987 and 1992. Between 1987 and 1997 the number of short-term German visitors more than doubled (from 53,300 to 128,900), while between 1992 and 1997 the number increased by 43% (from 89,900 to 128,900).

GERMAN VISITORS ARRIVALS, MONTHLY TREND—1988 TO 1997



Most short-term visitors from Germany in 1997 came to Australia for a holiday (69%) or to visit friends and relatives (16%). A smaller but still significant number came for business (7%) or education (2%). There were more male German visitors (68,300) than female (60,600). The most popular months for arrival in Australia in 1997 were December (15,000) and October (13,500).

HOLIDAY

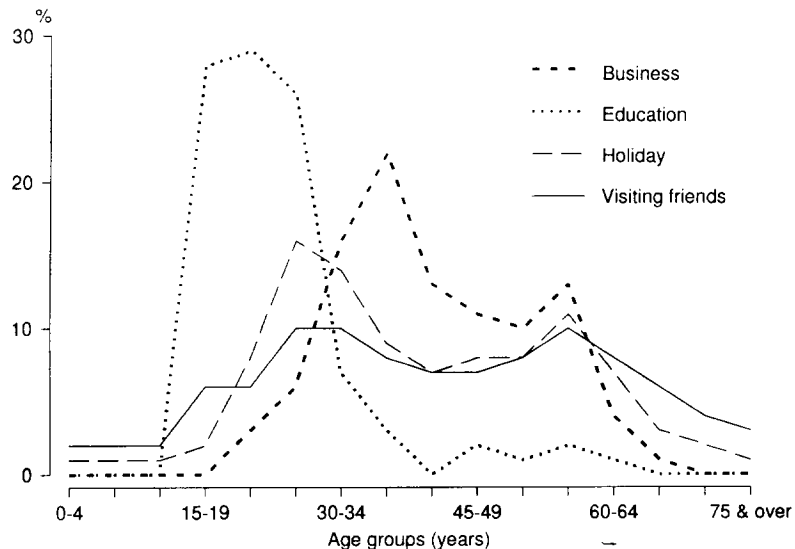
In 1997, 69% (89,300) of all short-term visitors from Germany came to Australia as holiday-makers (tourists). The peak age groups for German tourists in 1997 were the age groups 25–29 years and 30–34 years. These two age groups accounted for 30% of all German holiday-makers. The next highest group of tourists was the age group 55–59 years. Overall, there were more male holiday-makers (45,600) than female (43,700).

In 1997 New South Wales was the main destination for most German holiday-makers (47%), followed by Queensland (17%) and Victoria (13%). These three States were also the top destinations five years ago. However, for the first time since 1992 Northern Territory (10%) replaced Western Australia (9%) as the fourth most popular destination for German tourists. The median duration of stay for German holiday makers in Australia was 26 days.

ANALYSES AND COMMENTS

GERMAN RESIDENTS: VISITOR ARRIVALS

REASON FOR JOURNEY AND AGE, GERMAN VISITOR ARRIVALS—1997



VISITING FRIENDS/RELATIVES

Of the German short-term visitor arrivals to Australia in 1997, 16% (21,100) gave visiting friends and relatives as their reason for coming to Australia. Over the past five years this proportion has varied between 12% and 16%. Of this group of German visitors the peak age group was 30–34 year olds followed by 25–29 and 55–59 year olds; these three groups each accounted for 10% of all German short-term visitors visiting friends and relatives.

Short-term visitors from Germany who came to visit friends and relatives in 1997 intended to stay in Australia longer than German holiday-makers; the median duration of stay being 30 days.

BUSINESS

In 1997, 7% (9,100) of all short-term visitor arrivals from Germany indicated that business was the main reason for their visit to Australia. This proportion has remained similar over the past five years. Men represented 89% of this group. The peak age group was the 35–39 year olds, representing 24% of all male business visitors from Germany.

The main destinations for German business visitors in 1997 were New South Wales (49%) and Victoria (28%). Many business visitors from Germany intended to stay in Australia for a relatively short period of time; the median duration of stay being 10 days.

EDUCATION

In 1997, 2% (2,500) of short-term visitors from Germany stated education as their reason for visiting Australia. As might be expected, these students were concentrated in the younger ages with 83% aged between 15 and 29 years. New South Wales was the main destination for students (39%) followed by Victoria (26%) and Queensland (15%). German students also intended to stay longer than most short-term visitor arrivals; the median duration of stay being 91 days.

TABLE 1. TOTAL MOVEMENT — ARRIVALS: CATEGORY OF MOVEMENT

Period					Short-term arrivals(a)				Total arrivals (a)	
	Permanent arrivals	Long-term arrivals		Total permanent and long-term arrivals	('000)					
		Australian Settlers	Australian residents		Overseas visitors	Australian residents	Overseas visitors (Original)	Overseas visitors (Seasonally adjusted b)		Overseas visitors (Trend estimate c)
Year ended 31 December —										
1995	96,970	78,790	78,170	253,940	2,470.8	3,725.8	6,450.6	
1996	92,510	80,000	88,830	261,340	2,695.5	4,164.8	7,121.7	
1997	78,230	81,800	100,190	260,220	2,897.2	4,317.9	7,475.3	
Year ended 30 June —										
1995	87,430	79,060	72,030	238,520	2,387.0	3,535.3	6,160.8	
1996	99,140	79,210	84,370	262,720	2,569.3	3,966.2	6,798.2	
1997	85,760	80,170	95,080	261,000	2,786.0	4,252.7	7,299.7	
1996 —										
December	7,830	12,710	4,160	24,700	168.7	465.2	357.0	353.8	658.6	
1997 —										
January	7,290	7,680	15,120	30,090	330.8	342.9	355.3	355.2	703.8	
February	6,640	6,190	19,720	32,550	194.8	408.0	363.9	357.3	635.3	
March	7,350	6,240	6,490	20,080	208.2	390.9	354.7	359.8	619.2	
April	6,460	4,800	6,040	17,300	209.2	325.9	354.4	362.9	552.4	
May	6,140	4,600	4,400	15,140	197.5	289.1	372.5	366.8	501.7	
June	6,220	5,720	5,150	17,090	222.0	308.2	362.8	370.8	547.2	
July	6,520	6,940	14,780	28,240	285.1	397.4	397.1	373.3	710.7	
August	6,460	5,960	5,980	18,390	244.2	330.4	346.7	373.4	593.0	
September	6,250	6,330	5,910	18,480	270.6	330.9	389.6	370.5	620.0	
October	6,040	6,670	6,850	19,560	324.2	366.5	366.8	364.9	710.2	
November	6,230	7,440	5,170	18,830	235.6	379.5	349.7	358.4	633.8	
December	6,660	13,230	4,580	24,480	175.2	448.3	348.0	351.6	647.9	
1998 —										
January r	7,040	8,430	14,550	30,020	336.0	346.2	359.6	344.7	712.2	
February p	n.y.a	n.y.a	n.y.a	n.y.a	n.y.a	352.7	324.7	340.4	n.y.a	

(a) Figures for short-term movement are based on a sample and are subject to sampling error. See paragraphs 9 and 10 of the Explanatory Notes for more detail. (b) See paragraphs 16 and 17 of the Explanatory Notes. (c) See paragraphs 18 and 19 of the Explanatory Notes.

TABLE 2. TOTAL MOVEMENT — DEPARTURES: CATEGORY OF MOVEMENT

Period	Permanent departures	Long-term departures		Total permanent and long-term departures	Short-term departures(a) ('000)				Total departures (a) ('000)	
		Australian residents	Overseas visitors		Australian residents (Seasonally adjusted b)	Australian residents (Trend estimate c)	Overseas visitors			
Year ended 31 December —										
1995	27,870	69,080	52,410	149,360	2,518.6	3,676.8	6,344.8	
1996	28,480	70,960	58,820	158,260	2,732.0	4,110.8	7,001.1	
1997	30,340	77,180	69,040	176,560	2,932.8	4,281.2	7,390.5	
Year ended 30 June —										
1995	26,950	68,380	50,160	145,480	2,422.0	3,486.4	6,053.8	
1996	28,670	70,250	54,130	153,060	2,624.4	3,910.1	6,687.5	
1997	29,860	73,780	62,970	166,610	2,837.2	4,217.0	7,220.8	
1996 —										
November	2,450	4,770	6,720	13,940	218.2	236.9	234.8	362.3	594.5	
December	2,740	6,000	11,790	20,530	295.0	229.8	236.2	384.4	699.9	
1997 —										
January	3,000	10,540	5,250	18,800	194.4	238.2	238.1	434.3	647.6	
February	2,520	6,700	4,100	13,310	180.2	238.5	239.6	371.1	564.6	
March	2,720	6,810	5,000	14,530	250.4	254.4	240.8	385.1	650.1	
April	2,650	6,340	3,890	12,880	212.7	221.9	241.0	365.7	591.2	
May	2,390	5,660	3,700	11,750	251.3	257.3	240.9	305.4	568.4	
June	2,520	5,460	6,330	14,310	280.2	243.1	241.8	302.9	597.4	
July	2,690	6,520	6,350	15,560	249.3	223.8	243.7	351.1	616.0	
August	2,550	7,170	4,740	14,460	240.0	252.2	246.5	378.1	632.5	
September	2,100	5,310	4,750	12,160	304.2	253.0	249.2	303.2	619.6	
October	2,200	5,170	4,080	11,450	236.9	257.7	250.8	336.2	584.5	
November	2,330	5,330	7,520	15,170	232.5	256.8	251.6	381.9	629.6	
December	2,670	6,180	13,350	22,200	300.7	235.9	252.0	366.1	689.0	
1998 —										
January	3,330	11,030	6,450	20,800	207.3	255.2	252.1	422.7	650.8	

(a) Figures for short-term movement are based on a sample and are subject to sampling error. See paragraphs 9 and 10 of the Explanatory Notes for more detail. (b) See paragraphs 16 and 17 of the Explanatory Notes. (c) See paragraphs 18 and 19 of the Explanatory Notes.

TABLE 3. SHORT-TERM MOVEMENT(a) — ARRIVALS OF OVERSEAS VISITORS AND DEPARTURES OF AUSTRALIAN RESIDENTS BY INTENDED LENGTH OF STAY AND PURPOSE OF JOURNEY(b)
(^{'000})

	Year ended 30 June		Quarter ended 31 December		Seven months to January		Month of January	
	1996	1997	1996	1997	1997	1998	1997	1998
ARRIVALS								
Intended length of stay								
Under 1 week	1,216.7	1,335.3	336.8	338.0	748.8	766.8	102.3	92.3
1 and under 2 weeks	1,253.4	1,306.4	368.9	356.7	766.0	778.7	89.9	105.8
2 weeks and under 1 month	715.0	771.3	229.2	242.2	482.6	509.5	59.6	64.1
1 and under 2 months	359.0	380.1	130.7	127.3	248.5	247.8	33.3	33.2
2 and under 3 months	114.2	120.3	38.6	40.0	75.5	78.2	13.8	12.8
3 and under 6 months	146.9	162.6	49.8	50.1	104.5	106.6	18.0	15.2
6 and under 12 months	161.0	176.7	37.1	39.9	104.7	111.7	25.9	22.7
Total(c)	3,966.2	4,252.7	1,191.1	1,194.2	2,530.6	2,599.2	342.9	346.2
Purpose of journey(b)								
Convention/conference	103.2	115.3	29.4	27.7	66.7	63.0	5.4	4.5
Business	387.9	414.2	102.1	110.9	227.8	251.6	28.7	30.5
Visiting friends/relatives	737.5	788.9	259.2	275.9	491.5	524.1	62.7	66.6
Holiday	2,400.6	2,546.5	723.8	691.5	1,522.2	1,509.4	199.2	198.5
Employment	22.3	25.5	6.1	7.5	14.9	17.8	3.2	3.0
Education	118.3	140.0	18.0	17.0	80.2	78.5	23.1	17.8
Other and not stated	196.3	222.1	52.5	63.6	127.2	154.8	20.6	25.3
Total	3,966.2	4,252.7	1,191.1	1,194.2	2,530.6	2,599.2	342.9	346.2
DEPARTURES								
Intended length of stay								
Under 1 week	288.3	316.4	77.8	85.4	173.5	198.5	19.2	21.2
1 and under 2 weeks	650.5	720.4	182.0	197.4	427.4	465.6	51.9	58.4
2 weeks and under 1 month	695.5	740.6	193.7	198.8	445.5	467.2	59.7	62.8
1 and under 2 months	475.7	525.2	150.6	161.8	323.6	340.2	26.9	29.4
2 and under 3 months	202.2	206.5	57.5	60.5	124.7	126.7	10.1	8.4
3 and under 6 months	172.0	183.0	40.5	39.4	93.2	94.6	9.5	9.2
6 and under 12 months	140.1	145.1	25.0	26.8	74.5	78.2	17.1	18.1
Total(c)	2,624.4	2,837.2	727.2	770.1	1,662.4	1,770.9	194.4	207.3
Purpose of journey(b)								
Convention/conference	101.7	107.0	22.7	26.0	57.4	66.2	5.1	7.9
Business	462.5	509.7	117.2	121.2	284.5	295.9	40.0	37.6
Visiting friends/relatives	670.1	693.5	205.4	212.0	413.8	420.3	44.4	47.1
Holiday	1,186.3	1,318.4	338.2	358.7	789.7	850.8	84.5	91.5
Employment	76.6	72.5	15.7	17.9	40.8	46.5	7.8	9.1
Education	38.0	37.8	8.5	9.1	25.3	29.1	4.7	4.4
Other and not stated	89.1	98.3	19.6	25.2	51.0	62.1	7.8	9.8
Total	2,624.4	2,837.2	727.2	770.1	1,662.4	1,770.9	194.4	207.3

(a) Figures for short-term movement are based on a sample and are subject to sampling error. See paragraphs 9 and 10 of the Explanatory Notes for more detail. (b) Break in time series data. See paragraphs 3 and 4 of the Explanatory Notes for more detail. (c) Includes not stated.

TABLE 4. PERMANENT (SETTLER) ARRIVALS: COUNTRY OF BIRTH(a)

Country of birth(a)	Year ended 30 June		Quarter ended 31 December		Seven months to January		Month of January	
	1996	1997	1996	1997	1997	1998	1997	1998
Major group —								
Oceania and Antarctica	16,230	16,760	3,820	4,260	9,560	10,230	1,960	2,040
Europe and the Former USSR	26,460	22,170	6,500	4,950	14,390	11,430	1,730	1,680
Middle East and North Africa	7,610	6,230	1,650	1,390	3,730	3,290	420	380
Southeast Asia	13,150	11,360	3,300	2,440	6,940	5,720	760	820
Northeast Asia	18,670	15,130	3,860	2,360	9,670	6,160	1,140	910
Southern Asia	7,710	5,600	1,610	1,350	3,450	3,260	390	410
The Americas	3,820	3,460	960	680	2,290	1,710	320	220
Africa (excluding North Africa)	5,440	5,010	1,280	1,500	2,910	3,360	560	550
Total(b)	99,140	85,760	22,990	18,920	52,960	45,190	7,290	7,040
Major source countries —								
Bosnia-Herzegovina	3,410	2,060	500	300	1,360	890	160	110
China	11,250	7,760	2,180	1,010	5,260	2,590	530	320
Fiji	1,710	1,660	330	290	1,000	640	150	90
Former USSR and Baltic States	1,680	1,810	620	300	1,180	640	130	80
Former Yugoslavia n.f.d.(c)	3,050	2,100	520	290	1,380	850	140	100
Hong Kong (SAR of China)	4,360	3,890	930	810	2,370	2,000	290	340
India	3,700	2,680	750	730	1,600	1,740	180	230
New Zealand	12,270	13,070	3,020	3,410	7,320	8,380	1,570	1,740
Philippines	3,230	2,810	790	710	1,530	1,620	180	200
South Africa	3,190	3,210	780	1,010	1,810	2,330	370	390
Taiwan	1,640	2,180	410	270	1,210	900	210	150
United Kingdom	11,270	9,680	3,020	2,630	6,240	5,750	750	920
United States of America	1,630	1,530	430	300	1,000	790	140	90
Viet Nam	3,570	2,970	960	530	1,910	1,240	160	150

(a) See paragraphs 6 and 7 of

(b) Includes not stated. (c) In

persons with

cannot be

on any other

source.

**TABLE 5. SHORT-TERM MOVEMENT(a) — ARRIVALS OF OVERSEAS VISITORS
COUNTRY OF RESIDENCE(b)
(^{'000})**

Country of residence(b)	Year ended 30 June		Quarter ended 31 December		Seven months to January		Month of January	
	1996	1997	1996	1997	1997	1998	1997	1998
OCEANIA & ANTARCTICA —								
Fiji	20.4	20.0	6.8	7.1	12.7	13.3	1.6	2.1
New Caledonia	22.1	22.7	5.8	5.1	13.8	13.6	3.4	4.1
New Zealand	612.2	675.8	167.6	177.4	418.9	424.9	46.2	42.3
Papua New Guinea	40.9	44.3	12.0	12.4	28.6	28.2	4.8	4.7
Other	26.5	29.1	9.0	9.6	17.1	20.3	2.1	3.1
Total	722.1	791.7	201.1	211.6	491.3	499.6	58.1	55.6
EUROPE & THE FORMER USSR —								
Austria	17.1	18.1	6.2	7.7	12.3	13.5	1.8	1.6
Belgium	8.3	9.2	2.9	3.0	6.1	6.1	0.8	0.7
Denmark	17.0	17.3	5.3	5.3	10.7	10.5	1.8	1.9
Former USSR & Baltic States	9.0	8.2	2.5	3.3	4.9	6.2	0.7	1.3
France	33.3	38.8	10.6	10.9	25.3	26.1	4.0	3.6
Germany	123.3	127.4	41.0	41.2	79.8	80.9	12.6	12.1
Greece	7.7	8.4	3.0	3.1	5.1	5.8	0.8	0.7
Ireland	18.5	22.9	7.2	8.4	13.7	16.4	2.2	2.5
Italy	37.6	43.6	13.8	14.8	30.5	33.1	3.8	4.1
Netherlands	36.3	40.7	14.1	15.2	27.3	29.2	4.1	4.6
Norway	7.0	8.2	2.6	3.3	4.9	6.0	0.9	0.9
Spain	7.7	8.7	2.4	2.5	5.8	6.7	0.6	0.8
Sweden	23.2	24.0	9.7	9.6	15.8	16.0	2.3	2.6
Switzerland	36.4	39.1	14.6	14.1	26.9	26.4	4.2	4.1
United Kingdom	343.8	386.1	130.0	145.1	232.8	261.0	38.1	41.8
Other	30.1	34.6	11.9	12.8	21.9	25.4	3.2	5.2
Total	756.1	835.4	277.8	300.2	523.9	567.9	81.7	87.1
MIDDLE EAST & NORTH AFRICA —								
Israel	8.8	9.9	2.6	2.8	5.9	6.6	0.9	1.0
Other	21.5	24.4	5.8	6.5	15.7	16.8	1.6	1.6
Total	30.4	34.3	8.4	9.3	21.6	23.4	2.5	2.6
SOUTHEAST ASIA —								
Brunei	6.4	6.8	2.0	2.0	4.1	4.2	0.5	0.6
Indonesia	146.3	163.2	44.1	34.4	87.8	84.9	10.2	10.1
Malaysia	122.3	138.4	40.3	37.7	72.0	80.7	5.1	8.5
Philippines	30.9	38.1	9.5	9.9	19.0	21.8	2.6	2.5
Singapore	218.2	225.6	80.2	87.3	126.3	148.3	8.6	17.0
Thailand	83.2	87.3	23.4	12.9	47.0	26.7	4.7	3.2
Other	7.0	7.9	2.2	3.0	4.4	6.3	0.5	1.0
Total	614.3	667.3	201.8	187.2	360.5	372.9	32.2	42.9
NORTHEAST ASIA —								
China	49.7	60.4	16.5	20.2	34.2	41.5	4.8	6.7
Hong Kong (SAR of China)	152.2	154.9	38.7	36.0	85.1	86.3	10.7	15.1
Japan	813.5	802.4	192.1	195.3	479.1	491.3	67.6	68.3
Korea	196.0	250.4	73.6	54.6	155.4	113.7	30.8	5.6
Taiwan	158.1	152.4	36.4	32.8	83.4	87.3	11.9	14.9
Other	1.8	2.3	0.8	0.6	1.5	1.6	0.1	0.3
Total	1,371.2	1,422.8	358.1	339.5	838.7	821.8	125.9	110.9
SOUTHERN ASIA —								
India	19.0	24.0	5.8	7.4	12.8	15.0	1.9	2.0
Other	12.2	11.2	3.0	3.4	6.6	7.9	0.9	1.8
Total	31.2	35.2	8.8	10.8	19.4	22.2	2.8	3.1
THE AMERICAS —								
Canada	61.7	61.4	19.1	20.8	37.4	41.7	6.4	7.3
United States of America	310.4	321.3	89.5	89.2	186.5	197.7	25.6	28.6
Other	20.2	25.8	7.6	7.1	16.3	19.1	3.4	6.4
Total	392.3	408.6	116.2	117.0	240.1	256.0	35.4	39.7
AFRICA (excluding North Africa) —								
South Africa	36.5	45.1	15.0	14.9	27.8	28.0	3.0	3.2
Other	10.3	10.9	3.7	3.6	6.7	7.7	0.9	1.7
Total	46.9	56.0	18.7	18.5	34.5	35.2	3.9	4.4
Not stated	1.5	1.3	0.2	—	0.8	0.1	0.2	—
Total	3,966.2	4,252.7	1,191.1	1,194.2	2,530.6	2,599.2	342.9	346.2

(a) Figures for short-term movement are based on a sample and are subject to sampling error. See paragraphs 9 and 10 of the Explanatory Notes for more detail. (b) See paragraphs 6 and 7 of the Explanatory Notes.

**TABLE 6. SHORT-TERM MOVEMENT(a) — ARRIVALS OF OVERSEAS VISITORS
COUNTRY OF RESIDENCE(b)
(*000)**

Country of residence(b)	Quarter ended 31 December			Eight months to February			Month of February	
	1996	1997	% change	1997	1998	% change	1997	1998p
OCEANIA & ANTARCTICA —								
New Zealand	167.6	177.4	5.8	461.1	463.3	0.5	42.1	38.3
Total	201.1	211.6	5.2	543.1	546.6	0.6	51.8	47.0
EUROPE & THE FORMER USSR —								
Germany	41.0	41.2	0.5	92.9	93.4	0.5	13.0	12.5
Italy	13.8	14.8	7.2	33.5	36.9	10.1	3.0	3.7
Netherlands	14.1	15.2	7.8	31.4	33.4	6.4	4.0	4.2
Sweden	9.7	9.6	-1.0	18.4	19.1	3.8	2.6	3.0
Switzerland	14.6	14.1	-3.4	30.5	30.1	-1.3	3.6	3.7
United Kingdom	130.0	145.1	11.6	276.2	306.5	11.0	43.4	45.5
Total	277.8	300.2	8.1	610.4	658.5	7.9	86.5	90.6
MIDDLE EAST & NORTH AFRICA —								
Total	8.4	9.3	10.7	24.3	26.4	8.6	2.7	3.0
SOUTHEAST ASIA —								
Indonesia	44.1	34.4	-22.0	115.7	95.8	-17.2	27.9	10.9
Malaysia	40.3	37.7	-6.5	92.3	92.8	0.5	20.3	12.2
Philippines	9.5	9.9	4.2	21.6	24.3	12.5	2.6	2.5
Singapore	80.2	87.3	8.9	146.2	165.8	13.4	20.0	17.5
Thailand	23.4	12.9	-44.9	52.9	31.1	-41.2	5.9	4.4
Total	201.8	187.2	-7.2	438.7	419.7	-4.3	78.2	46.8
NORTHEAST ASIA —								
China	16.5	20.2	22.4	39.1	48.3	23.5	4.9	6.7
Japan	192.1	195.3	1.7	553.2	560.3	1.3	74.1	69.0
Korea	73.6	54.6	-25.8	173.7	118.8	-31.6	18.2	5.1
Taiwan	36.4	32.8	-9.9	101.6	104.0	2.4	18.2	16.7
Total	358.1	339.5	-5.2	979.0	935.3	-4.5	140.4	113.5
THE AMERICAS —								
Canada	19.1	20.8	8.9	44.2	48.4	9.5	6.8	6.7
United States of America	89.5	89.2	-0.3	218.7	231.4	5.8	32.2	33.7
Total	116.2	117.0	0.7	281.1	298.8	6.3	41.0	42.8
AFRICA (excluding North Africa) —								
South Africa	15.0	14.9	-0.7	31.1	31.5	1.3	3.3	3.4
Total	18.7	18.5	-1.1	38.8	39.9	2.8	4.3	4.7
Total	1,191.1	1,194.2	0.3	2,938.6	2,951.9	0.5	408.0	352.7

(a) Figures for short-term movement are based on a sample and are subject to sampling error. See paragraphs 9 and 10 of the Explanatory Notes for more detail. (b) See paragraphs 6, 7, 12 and 13 of the Explanatory Notes.

**TABLE 7. SHORT-TERM MOVEMENT(a) — DEPARTURES OF AUSTRALIAN RESIDENTS
MAIN DESTINATION(b)
(^{'000})**

Main destination(b)	Year ended 30 June		Quarter ended 31 December		Seven months to January		Month of January	
	1996	1997	1996	1997	1997	1998	1997	1998
OCEANIA & ANTARCTICA —								
Fiji	73.4	74.9	20.7	21.8	46.3	48.4	5.8	6.8
New Caledonia	12.1	14.0	4.9	4.7	9.4	10.0	0.6	0.8
New Zealand	396.9	409.8	121.5	116.2	251.4	251.0	33.9	36.3
Norfolk Island	18.2	20.3	5.0	7.2	11.0	14.3	1.4	2.1
Papua New Guinea	37.0	39.4	9.3	10.5	22.3	25.2	3.4	3.3
Vanuatu	19.0	20.0	3.7	6.2	9.9	15.0	1.7	2.5
Other	25.7	27.6	9.0	10.1	18.4	20.9	1.5	3.2
Total	582.3	606.0	174.2	176.7	368.7	383.6	48.3	54.0
EUROPE & THE FORMER USSR —								
France	25.8	30.9	6.9	8.7	16.5	20.3	1.7	1.8
Germany	31.9	33.8	7.3	8.7	18.2	21.0	1.7	2.3
Greece	34.4	36.7	4.5	5.1	17.6	20.1	0.5	1.0
Ireland	16.1	20.2	3.9	5.6	12.6	13.4	0.7	0.6
Italy	53.1	62.6	9.9	9.8	33.5	32.7	2.2	1.6
Netherlands	15.7	15.6	2.9	3.4	9.4	8.0	0.7	0.4
Poland	6.6	6.2	1.0	1.4	3.1	3.3	0.1	0.2
Spain	8.9	9.0	2.2	2.6	5.3	6.1	0.4	0.7
Switzerland	10.2	9.4	2.4	2.4	6.2	6.5	0.8	0.8
United Kingdom	277.4	304.3	57.6	67.2	161.7	180.5	12.4	13.0
Other	80.0	83.0	14.0	14.1	43.8	48.6	2.6	6.6
Total	560.1	611.8	112.7	129.0	328.0	357.7	23.7	26.1
MIDDLE EAST & NORTH AFRICA —								
Israel	9.3	10.3	3.4	2.5	5.8	6.1	0.4	0.8
Lebanon	17.2	17.8	2.8	4.1	9.6	10.7	0.7	0.9
Turkey	10.7	14.3	1.4	2.6	6.5	7.8	0.2	0.4
Other	21.0	21.4	5.5	7.0	12.0	16.0	1.7	3.2
Total	58.1	63.9	13.1	16.2	33.9	39.5	3.1	4.2
SOUTHEAST ASIA —								
Indonesia	238.2	279.6	69.5	81.2	169.2	200.4	20.6	20.7
Malaysia	90.9	101.9	28.7	24.3	63.0	61.3	7.8	9.7
Philippines	53.1	59.8	18.5	18.8	34.2	34.9	4.4	4.5
Singapore	98.6	99.5	26.2	26.3	59.8	65.8	8.1	8.5
Thailand	80.8	84.3	22.8	26.2	47.9	53.1	6.5	6.9
Viet Nam	39.4	45.9	15.3	14.6	30.6	28.0	6.1	6.0
Other	9.0	8.5	2.7	3.5	5.1	6.8	1.0	1.2
Total	609.9	679.4	183.7	195.0	409.7	450.3	54.5	57.5
NORTHEAST ASIA —								
China	54.4	58.8	16.5	23.3	33.8	49.8	4.1	6.6
Hong Kong (SAR of China)	162.3	177.2	51.5	40.6	102.8	81.1	12.9	12.2
Japan	44.8	50.5	12.3	16.0	29.6	34.1	4.4	3.1
Korea	14.6	18.0	5.1	4.3	10.9	10.0	1.0	1.1
Taiwan	29.8	31.6	9.2	11.5	19.0	22.2	2.5	2.4
Other	1.7	1.8	0.6	0.7	1.0	1.2	—	0.1
Total	307.5	337.9	95.1	96.5	197.0	198.4	25.0	25.5
SOUTHERN ASIA —								
India	38.3	35.4	15.9	17.0	24.1	26.1	2.6	3.0
Sri Lanka	8.8	11.2	4.7	5.5	6.9	8.8	0.5	0.6
Other	13.3	15.3	5.8	6.2	9.6	10.3	0.6	1.1
Total	60.4	61.9	26.3	28.7	40.6	45.2	3.7	4.7
THE AMERICAS —								
Canada	44.3	48.0	8.9	9.9	26.9	28.8	3.2	2.8
United States of America	328.2	338.1	85.5	91.2	200.2	214.8	25.8	26.5
Other	22.6	25.2	9.6	11.3	16.8	18.6	2.2	2.4
Total	395.2	411.3	104.0	112.5	244.0	262.3	31.2	31.7
AFRICA (excluding North Africa) —								
South Africa	23.0	30.0	9.0	8.3	18.8	18.3	2.4	2.0
Other	16.7	24.6	5.9	6.0	14.4	12.7	1.4	1.2
Total	39.7	54.6	14.9	14.2	33.2	31.0	3.8	3.1
Not stated	11.0	10.4	3.2	1.1	7.3	3.0	1.0	0.6
Total	2,624.4	2,837.2	727.2	770.1	1,662.4	1,770.9	194.4	207.3

(a) Figures for short-term movement are based on a sample and are subject to sampling error. See paragraphs 9 and 10 of the Explanatory Notes for more detail. (b) See paragraphs 6 and 7 of the Explanatory Notes.

**TABLE 8. SHORT-TERM MOVEMENT(a) — DEPARTURES OF OVERSEAS VISITORS
STATE/TERRITORY IN WHICH MOST TIME WAS SPENT
(^{'000})**

State/Territory in which most time was spent	Year ended 30 June		Quarter ended 31 December		Seven months to January		Month of January	
	1996	1997	1996	1997	1997	1998	1997	1998
New South Wales	1,749.6	1,835.4	457.7	454.8	1,064.8	1,062.1	194.0	184.9
Victoria	483.8	553.9	143.8	151.8	315.6	345.0	63.0	61.7
Queensland	1,111.2	1,233.9	309.8	310.7	759.2	766.4	115.1	109.0
South Australia	82.6	87.5	24.0	26.3	52.0	56.5	10.9	11.3
Western Australia	366.3	389.5	103.8	109.6	225.3	240.2	41.1	45.4
Tasmania	25.4	25.5	7.1	8.4	14.2	15.3	3.6	3.5
Northern Territory	42.2	43.2	10.5	10.2	26.5	27.9	2.2	2.6
Australian Capital Territory	31.7	33.3	9.5	9.5	20.6	21.1	3.5	4.1
Other Territories(b)	n.a.	14.9	3.3	3.0	8.6	4.7	1.1	0.3
Total(c)	3,910.1	4,217.0	1,069.6	1,084.2	2,486.8	2,539.3	434.3	422.7

(a) Figures for short-term movement are based on a sample and are subject to sampling error. See paragraphs 9 and 10 of the Explanatory Notes for more detail. (b) Not available prior to February 1995. Includes Territories of Christmas Island, Cocos (Keeling) Islands and Jervis Bay. (c) Includes not stated.

**TABLE 9. SHORT-TERM MOVEMENT(a) — ARRIVALS OF OVERSEAS VISITORS
COUNTRY OF RESIDENCE(b) AND PURPOSE OF JOURNEY(c)
SEVEN MONTHS TO JANUARY**

	Seven months to January						Percentage change 1995 to 1997	Percentage change 1996 to 1997
	1996		1997		1998			
	('000)	%	('000)	%	('000)	%		
Country of residence(b)								
Major group —								
Oceania and Antarctica	420.2	18	491.3	19	499.6	19	19	2
Europe and the Former USSR	468.5	20	523.9	21	567.9	22	21	8
Middle East and North Africa	19.4	1	21.6	1	23.4	1	21	8
Southeast Asia	324.4	14	360.5	14	372.9	14	15	3
Northeast Asia	800.8	35	838.7	33	821.8	32	3	-2
Southern Asia	17.0	1	19.4	1	22.2	1	31	14
The Americas	226.8	10	240.1	9	256.0	10	13	7
Africa (excluding North Africa)	28.1	1	34.5	1	35.2	1	25	2
Total(d)	2,306.3	100	2,530.6	100	2,599.2	100	13	3
Selected source countries(b) —								
Germany	75.8	3	79.8	3	80.9	3	7	1
Hong Kong (SAR of China)	83.9	4	85.1	3	86.3	3	3	1
Indonesia	79.0	3	87.8	3	84.9	3	7	-3
Japan	485.2	21	479.1	19	491.3	19	1	3
Korea	119.2	5	155.4	6	113.7	4	-5	-27
Malaysia	59.9	3	72.0	3	80.7	3	35	12
New Zealand	352.4	15	418.9	17	424.9	16	21	1
Singapore	121.2	5	126.3	5	148.3	6	22	17
Taiwan	82.7	4	83.4	3	87.3	3	6	5
United Kingdom	204.2	9	232.8	9	261.0	10	28	12
United States of America	176.5	8	186.5	7	197.7	8	12	6
Purpose of journey(c)								
Convention/conference	55.8	2	66.7	3	63.0	2	13	-6
Business	222.3	10	227.8	9	251.6	10	13	10
Visiting friends/relatives	442.9	19	491.5	19	524.1	20	(c)	7
Holiday	1,392.6	60	1,522.2	60	1,509.4	58	(c)	-1
Employment	13.1	1	14.9	1	17.8	1	36	19
Education	64.0	3	80.2	3	78.5	3	23	-2
Other and not stated	115.6	5	127.2	5	154.8	6	34	22
Total	2,306.3	100	2,530.6	100	2,599.2	100	13	3

(a) Figures for short-term movement are based on a sample and are subject to sampling error. See paragraphs 9 and 10 of the Explanatory Notes for more detail. (b) See paragraphs 6 and 7 of the Explanatory Notes for more detail. (c) Break in time series data. See paragraphs 3 and 4 of the Explanatory Notes for more detail. (d) Includes not stated.

EXPLANATORY NOTES

INTRODUCTION

1 This publication contains statistics of persons arriving in, and departing from, Australia, together with the major characteristics of travellers. More detailed statistics can be made available on request (see paragraph 23).

SOURCE OF THE STATISTICS

2 Persons arriving in, or departing from, Australia are required to complete prescribed questionnaires in the form of Incoming and Outgoing Passenger Cards (see Appendix). These cards provide information to the Department of Immigration and Multicultural Affairs (DIMA) for administrative purposes and serve as the source of statistics of overseas arrivals and departures. In some cases pre-recorded visa data is used in lieu of passenger card data by DIMA. In accordance with the *Census and Statistics Act 1905*, information relating to individuals, individual flights or ships and individual carriers, which is contained in these cards or other documents, is treated as confidential by the Australian Bureau of Statistics (ABS).

3 Implementation of the *Migration Reform Act 1992* by DIMA required that a health and character check be incorporated with the Incoming Passenger Card. The redesign of both passenger cards followed and new passenger cards were officially introduced on 1 September 1994, with minor alterations to the cards in March 1995. The two main statistical changes affect *Marital status* and *Purpose of journey* and constitute a break in time series for these data items.

4 In addition to the four *Marital status* categories of 'Never married', 'Married', 'Widowed' and 'Divorced', both passenger cards now include 'Separated but not divorced' and 'Common law/de facto'. The following changes were also made to the *Purpose of journey* question: on the Incoming Passenger Card 'In transit' was dropped; on the Outgoing Passenger Card 'Student vacation' was dropped; and on both cards 'Visiting relatives' was changed to 'Visiting friends/relatives', 'Convention' was changed to 'Convention/conference' and 'Accompanying business visitor' was dropped.

SCOPE

5 The statistics in this publication relate to the number of movements of travellers rather than the number of travellers (i.e. the multiple movements of individual persons during a given reference period are each counted separately). The statistics exclude the movements of operational air and ships' crew, of transit passengers who pass through Australia but are not cleared for entry, and of passengers on pleasure cruises commencing and finishing in Australia aboard ships not then engaged on regular voyages.

COUNTRY CLASSIFICATION

6 The classification of countries in this publication is the *Australian Standard Classification of Countries for Social Statistics* (ASCCSS). For more detailed information refer to the ABS publication *Australian Standard Classification of Countries for Social Statistics* (1269.0). Political developments in Europe, the former USSR and Africa have resulted in a number of changes, and are detailed in Revisions 1.01–1.03 of the ASCCSS.

7 Statistics on country of birth, citizenship, residence or main destination have certain limitations because of inadequate reporting on passenger cards. For instance, it is not possible to identify separately England, Scotland and Wales. Similarly Korea includes both the Republic of Korea and the Democratic People's Republic of Korea.

STATE AND TERRITORY CLASSIFICATION

8 Following the 1992 amendment to the *Acts Interpretation Act* to include the Indian Ocean Territories of Christmas Island and the Cocos (Keeling) Islands as part of geographic Australia, population estimates commencing with the September quarter 1993 include estimates for these two territories. To reflect this change, another category of the State/Territory classification has been created, known as Other Territories. Other Territories includes Jervis Bay Territory, Christmas Island and the Cocos (Keeling) Islands. Data for Other Territories are included in tables where specifically noted.

EXPLANATORY NOTES

ESTIMATION METHOD

9 Overseas arrival and departure statistics are derived from a combination of full enumeration and sampling. All permanent movements and all movements with a duration of stay of one year or more are fully enumerated. All movements with a duration of stay of less than one year are sampled. Statistics relating to these movements are therefore estimates which may differ from statistics which would have been obtained if details of all these movements had been processed.

10 From April 1995, the fractions used for sampling movements of the citizens of Australia, France, Germany, Japan and Taiwan were changed, reflecting increases in the number of movements. From May 1995 further changes were made to the fractions used for sampling movements of citizens of Indonesia, Italy, Malaysia, Netherlands, Singapore, Republic of Korea, Switzerland and Thailand. Comments on the sampling errors associated with the estimates are contained in the Standard Errors pages.

11 The statistics in this publication have been rounded to the nearest 100 for short-term movements and to the nearest 10 for permanent and long-term movements. In tables showing both short-term and permanent and long-term movements the total movements have been rounded to the nearest 100. The sums of the components may, due to rounding, not add exactly to totals.

12 From the June 1997 issue, this publication includes preliminary estimates of visitor arrivals by country of residence (see Table 6, page 9). These preliminary estimates will be revised in the next issue of this publication, when final data is available.

13 Department of Immigration and Ethnic Affairs maintains the Travel and Immigration Processing System (TRIPS). The TRIPS system produces a limited range of data, including country of citizenship, which is used in an ABS model to produce preliminary estimates by country of usual residence. For more information see page 3-4 of the June 1997 issue of this publication.

CORRECTIONS AND IMPUTATIONS

14 The imprecision due to sampling errors should not be confused with errors arising from imperfections in reporting, which may occur in any data collection, whether sampled or not. Every effort is made to minimise such errors, both through careful design of the passenger cards and through checks on the information once it is received. During the edit process some items are corrected where they conflict with other known information. Missing replies to certain items such as age and country of birth are also imputed by reference to other related items.

15 Errors of this kind differ from discrepancies arising from the fact that certain information reflects the travellers' intentions at the time the passenger cards were completed. These intentions are, of course, subject to change. Particularly affected is the distinction between permanent and temporary movement and in the latter case, length of intended stay, country in which most time will be spent and purpose of journey.

SEASONAL ADJUSTMENT AND TREND ESTIMATES

16 Original and seasonally adjusted short-term overseas visitor arrivals and short-term Australian resident departures are shown in Tables 1 and 2 respectively. In the seasonally adjusted series, account has been taken of normal seasonal factors and trading day effects (arising from the varying numbers of Sundays, Mondays, Tuesdays etc. in the month) and the effect of movement in the date of Easter which may, in successive years, affect figures for different months.

EXPLANATORY NOTES

SEASONAL ADJUSTMENT AND TREND ESTIMATES

continued

17 Seasonal adjustment is a means of removing the estimated effects of normal seasonal variation from the series so that the effects of other influences on the series may be more clearly recognised. Seasonal adjustment procedures do not aim to remove the irregular or non-seasonal influences which may be present in any particular month, such as the effect of major sporting and cultural events, changes in airfares and the fluctuation of \$A relative to other currencies. Irregular influences that are highly volatile can make it difficult to interpret the movement of the series even after adjustment for seasonal variation.

18 The trend estimates for short-term overseas visitor arrivals and short-term Australian resident departures are shown in Tables 1 and 2 respectively. These trend estimates are derived by applying a 13-term Henderson-weighted moving average to all months of the respective seasonally adjusted series except the first and last six months. Trend series are created for the last six months by applying surrogates of the Henderson weighted moving average to the seasonally adjusted series.

19 While this technique enables smoothed data for the latest period to be produced, it does result in revisions to the smoothed series, principally of recent months, as additional observations become available. There may also be revisions as a result of the re-estimation of the seasonal factors. For further information, see *A Guide to Interpreting Time Series — Monitoring 'Trends', an Overview* (1348.0) or contact the Assistant Director, Time Series Analysis on 02 6252 6354.

RELATED PUBLICATIONS

20 Users of these statistics may also wish to refer to the following ABS publications:

- *Australian Demographic Statistics* (3101.0) — issued quarterly
- *Migration, Australia* (3412.0) — issued annually
- *Tourism Indicators, Australia* (8634.0) — issued quarterly

21 Related statistics are also published by the Department of Immigration and Multicultural Affairs, the Department of Transport and Communications and the Bureau of Tourism Research.

22 Current publications produced by the ABS are listed in the *Catalogue of Publications and Products, Australia* (1101.0). The ABS also issues, on Tuesdays and Fridays, a *Release Advice* (1105.0) which lists publications to be released in the next few days. Both are available from any ABS office or the ABS website.

ADDITIONAL STATISTICS AVAILABLE

23 In some cases, the ABS can make available information which is not published. This information may be made available in one or more of the following forms: microfiche, photocopy, data tape, floppy disk, computer printout, clerically-extracted tabulations. Generally, a charge is made for providing unpublished information. A full list of unpublished Overseas Arrival and Departure tabulations is available on request.

SYMBOLS AND OTHER USAGES

- nil or rounded to zero
- .. not applicable
- p preliminary
- n.a. not available
- n.f.d. not further defined
- n.y.a. not yet available
- r revised

G L O S S A R Y



Australian resident	Australian residence is self-defined as reported by travellers when completing Incoming and Outgoing Passenger Cards.
Category of movement	<p>Overseas Arrivals and Departures are classified according to length of stay (in Australia or overseas), recorded in months and days by travellers on passenger cards. There are three main <i>categories of movement</i>:</p> <ul style="list-style-type: none"> ▪ permanent movements ▪ long-term movements ▪ short-term movements. <p>A significant number of travellers (i.e. overseas visitors to Australia on arrival and Australian residents going abroad) state exactly 12 months or one year as their intended period of stay. Many of them stay for less than that period and on their departure from, or return to, Australia are therefore classified as short-term. Accordingly in an attempt to maintain consistency between arrivals and departures, movements of travellers who report their actual or intended period of stay as being one year exactly are randomly allocated to long-term or short-term, in proportion to the number of movements of travellers who report their actual length of stay as up to one month more, or one month less, than one year.</p>
Country of residence	Country of residence refers to the country in which travellers regard themselves as living or as last having lived.
Intended length of stay	On arrival in Australia, all overseas visitors are asked to state their 'Intended length of stay in Australia'. On departure from Australia, all Australian residents are asked to state their 'Intended length of stay abroad'.
Long-term arrivals	<p>Long-term arrivals comprise:</p> <ul style="list-style-type: none"> ▪ overseas visitors who intend to stay in Australia for 12 months or more (but not permanently); and ▪ Australian residents returning after an absence of 12 months or more overseas.
Long-term departures	<p>Long-term departures comprise:</p> <ul style="list-style-type: none"> ▪ Australian residents who intend to stay abroad for 12 months or more (but not permanently); and ▪ overseas visitors departing who stayed 12 months or more in Australia.
Main destination	Australian residents travelling overseas are asked on departure for the name of the country in which they intend to spend most time.
Overseas Arrivals and Departures (OAD)	Overseas Arrivals and Departures refer to the arrival or departure of Australian residents or overseas visitors, through Australian airports (or sea ports), which have been recorded on Incoming or Outgoing Passenger Cards. Statistics on Overseas Arrivals and Departures relate to the number of movements of travellers rather than the number of travellers (i.e. the multiple movements of individual persons during a given reference period are all counted).

G L O S S A R Y

Permanent arrivals	<p>Permanent arrivals (settlers) comprise:</p> <ul style="list-style-type: none"> ▪ travellers who hold migrant visas (regardless of stated intended period of stay); ▪ New Zealand citizens who indicate an intention to settle; and ▪ those who are otherwise eligible to settle (e.g. overseas born children of Australian citizens). <p>This definition of settlers is used by the Department of Immigration and Multicultural Affairs. Prior to 1985 the definition of settlers used by the ABS was the stated intention of the traveller only. Numerically the effect of the change in definition is insignificant. The change was made to avoid the confusion caused by minor differences between data on settlers published separately by the ABS and the Department of Immigration and Multicultural Affairs.</p>
Permanent departures	<p>Permanent departures are Australian residents (including former settlers) who on departure state that they intend to settle permanently in another country.</p>
Purpose of journey	<p>On arrival in, or departure from, Australia all overseas visitors and Australian residents are asked to state their purpose of journey. From September 1994, all statistics relating to <i>purpose of journey</i> have been published using the following categories:</p> <ul style="list-style-type: none"> ▪ convention/conference ▪ business ▪ visiting friends/relatives ▪ holiday ▪ employment ▪ education ▪ other <p>In tabulations of data collected before September 1994, the 'Other' category includes 'In transit' and the 'Holiday' category includes both 'Student vacation' and 'Accompanying business visitor'.</p>
Short-term arrivals	<p>Short-term arrivals comprise:</p> <ul style="list-style-type: none"> ▪ overseas visitors whose intended stay in Australia is less than 12 months; and ▪ Australian residents returning after an absence of less than 12 months overseas.
Short-term departures	<p>Short-term departures comprise:</p> <ul style="list-style-type: none"> ▪ Australian residents who intend to stay abroad for less than 12 months; and ▪ overseas visitors departing who stayed less than 12 months in Australia.
State/Territory of stay	<p>Overseas visitors are asked on departure for the name of the State or Territory in which they spent the most time.</p>

STANDARD ERRORS

RELIABILITY OF ESTIMATES

1 Estimates based on a sample are subject to sampling variability i.e. they may differ from those that would be obtained from full enumeration.

2 The sampling error associated with any estimate can be estimated from the sample results and one measure so derived is the standard error. Given an estimate and the standard error on that estimate, there are about two chances in three that the sample estimate will differ by less than one standard error from the figure that would have been obtained from full enumeration, and about nineteen chances in twenty that the difference will be less than two standard errors. The relative standard error is the standard error on the estimate expressed as a percentage of the estimate.

3 It would be impractical to publish estimates of standard errors for all figures in individual tables. However, the following tables of standard errors and relative standard errors give an indication of the magnitude of the sampling error associated with any estimate of a particular size for short-term and total movement.

APPROXIMATE STANDARD ERRORS ON ESTIMATES FOR STRATIFIED SAMPLE

<i>Estimated number of persons</i>	SHORT-TERM DEPARTURE OR ARRIVAL OF AUSTRALIAN RESIDENTS		SHORT-TERM ARRIVAL OR DEPARTURE OF OVERSEAS VISITORS		TOTAL ARRIVALS OR DEPARTURES	
	<i>Standard error</i>	<i>Relative standard error</i>	<i>Standard error</i>	<i>Relative standard error</i>	<i>Standard error</i>	<i>Relative standard error</i>
	no.	%	no.	%	no.	%
10 000	550	6	490	5	550	6
5 000	450	9	330	7	410	8
2 000	280	14	230	11	250	13
1 000	200	20	150	15	170	17
750	180	24	140	19	150	20
500	130	26	110	22	125	25
400	120	30	100	25	115	29
300	110	36	84	28	97	32
200	90	45	70	35	80	40
100	63	63	49	49	56	56

4 An example of the use of this table is as follows. If the estimate of the number of Australian resident departures for short-term visits abroad is 500, then the standard error on this estimate is 130 i.e. there are two chances in three that the actual number of Australian resident departures for short-term visits abroad will lie between 370 and 630 and nineteen chances in twenty that it will lie between 240 and 760.

5 The larger the size of an estimate the smaller the relative standard error. For any estimate of greater than 10,000 the relative standard error will be less than 6%.

STANDARD ERRORS

RELIABILITY OF ESTIMATES

continued

6 The estimate of the difference between an estimate in two different periods or between different estimates from the same period is also subject to sampling error. The standard error on the difference between any two estimates which are subject to sampling error can be approximated by using the larger standard error of the estimates inflated by a factor of 1.4.

7 An example of the use of this procedure is as follows. Assume the estimates of the number of arrivals to Australia from Taiwan during January 1994 and January 1995 are 1,500 and 750 respectively. The difference between the 1994 and 1995 figures is 750 and the standard errors on these estimates are approximately 190 and 140. The standard error on the difference is approximately 266 (1.4×190), and there are nineteen chances in twenty that the estimate of the difference between the two years will lie between 218 and 1,282.

APPENDIX — PASSENGER CARDS(a)

INCOMING CARD

One of these cards must be answered for each passenger.
Complete in **ENGLISH**, using BLOCK LETTERS.

AUSTRALIA
INCOMING PASSENGER CARD

1 Family/Surname

2 Given names

3 Passport number

4 Nationality as shown in passport

5 Country of birth

6 Date of birth Day Month Year

7 Sex: Male ☐ Female ☐

8 Current marital status: Never married ☐ Widowed ☐ Separated but not divorced ☐
Married ☐ Divorced ☐ Common law / de facto ☐

9 Please ☒ and answer **only one** of A or B or C

A Migrating permanently to Australia

(1) Previous country of residence

(2) Main reason for coming to Australia (☒ one only):
Convention/conference ☐ a Business ☐ b
Visiting friends/relatives ☐ c Holiday ☐ d
Employment ☐ e Education ☐ f Other ☐ g

(3) Country of residence

B Visitor or temporary entrant

(1) Intended length of stay in Australia
Years Months Days
OR

(2) Country where you spent most time while abroad

C Resident returning to Australia

(1) Time you have been away from Australia
Years Months Days
OR

10 Usual occupation

11 Intended address in Australia State

12 Flight number or name of ship

13 Country where boarded this flight/ship

Questions continue ➔

14 Are you an Australian CITIZEN?

Yes ☐ ➔ Go straight to 'Please sign here' at 15

No ☐ ➔ Please answer the following questions.

You may answer 'No change' if there is no change to the answer you gave to the same question on your last Australian visa application form.

(a) Do you currently suffer from tuberculosis? No change ☐ No ☐ Yes ☐

(b) Have you any criminal conviction/s for which the sentence/s (whether served or not) totalled 12 months imprisonment or more? No change ☐ No ☐ Yes ☐

15 Please sign here
to declare that the information you have given on this card is complete. Migration legislation requires that you answer all questions truthfully.

Date DAY MONTH YEAR

The Department of Immigration and Ethnic Affairs (DIEA) is authorised to collect information provided on this form under Part 2 of the *Migration Act 1958*: Control of Arrival and Presence of Non-citizens. The information will be used to administer the Migration Act. It might also be disclosed to agencies authorised to receive information on adoption, border control, business skills, citizenship, education, health assessment, health insurance, health services, law enforcement, payment of pensions and benefits, refugees, settlement planning, taxation and review of decisions. You should read the information form *Safeguarding Your Personal Information*, which is available at Australian ports and airports and offices of DIEA.

OFFICE USE ONLY

Visa number

Visa class

© Commonwealth of Australia 1995
McMillan Print

PZ 015 (03-95)

(a) See paragraphs 3 and 4 of the Explanatory Notes for more detail.

APPENDIX — PASSENGER CARDS (a)

OUTGOING CARD

One of these cards must be answered for each passenger.
Complete in **ENGLISH**, using **BLOCK LETTERS**.

AUSTRALIA
OUTGOING PASSENGER CARD

1	Family/Surname	
2	Given names	
3	Passport number	
4	Nationality as shown in passport	
5	Country of birth	
6	Date of birth	Day <input type="text"/> Month <input type="text"/> Year <input type="text"/>
7	Sex:	Male <input type="radio"/> Female <input type="radio"/>
8	Current marital status	Never married <input type="radio"/> Widowed <input type="radio"/> Separated but not divorced <input type="radio"/> Married <input type="radio"/> Divorced <input type="radio"/> Common law / de facto <input type="radio"/>
9	Please <input checked="" type="checkbox"/> and answer only one of D or E or F	
D	Visitor or temporary entrant departing	
(1)	Length of time you have been in Australia this visit	Years <input type="text"/> Months <input type="text"/> Days <input type="text"/> OR Days <input type="text"/>
(2)	Australian city or State where you spent most time	<input type="text"/>
(3)	Country of residence	<input type="text"/>
E	Resident departing temporarily	
(1)	Intended length of stay abroad	Years <input type="text"/> Months <input type="text"/> Days <input type="text"/> OR <input type="text"/>
(2)	Main reason for going abroad (<input checked="" type="checkbox"/> one only)	Convention/conference <input type="radio"/> Business <input type="radio"/> Visiting friends/relatives <input type="radio"/> Holiday <input type="radio"/> Employment <input type="radio"/> Education <input type="radio"/> Other <input type="radio"/>
(3)	Country in which you will spend most time while abroad	<input type="text"/>
(4)	Australian State where you live	<input type="text"/>
F	Resident departing permanently	
(1)	Country of future residence	<input type="text"/>
(2)	Australian State where you lived	<input type="text"/>
(3)	If you were not born in Australia	• How long ago did you come to live in Australia? Years <input type="text"/> Months <input type="text"/> • Did you intend to settle permanently? Yes <input type="radio"/> No <input type="radio"/>
10	Usual occupation	<input type="text"/>
11	Flight number or name of ship	<input type="text"/>
12	Overseas country where you will get off this flight or ship	<input type="text"/>

Questions continue ➔

13	Airport / Port of departure	<input type="text"/>
14	Departure date	Day <input type="text"/> Month <input type="text"/> Year <input type="text"/>
15	Please sign here to declare that the information you have given on this card is complete. Migration legislation requires that you answer all questions truthfully.	<div style="border: 1px solid black; height: 40px; width: 150px; margin-bottom: 5px;"></div> <div style="display: flex; justify-content: space-between;"> Date <div> DAY <input type="text"/> MONTH <input type="text"/> YEAR <input type="text"/> </div> </div>

The Department of Immigration and Ethnic Affairs (DIEA) is authorised to collect information provided on this form under Part 2 of the *Migration Act 1958*. Control of Arrival and Presence of Non-citizens. The information will be used to administer the Migration Act. It might also be disclosed to agencies authorised to receive information on adoption, border control, business skills, citizenship, education, health assessment, health insurance, health services, law enforcement, payment of pensions and benefits, refugees, settlement planning, taxation and review of decisions. You should read the information form *Safeguarding Your Personal Information*, which is available at Australian ports and airports and offices of DIEA.

OFFICE USE ONLY ➔

Departure tab

© Commonwealth of Australia 1995
McMillan Print

PZ 016 (03-95)

(a) See paragraphs 3 and 4 of the Explanatory Notes for more detail.

FOR MORE INFORMATION . . .

The ABS publishes a wide range of information on Australia's economic and social conditions. A catalogue of publications and products is available from any of our offices (see below).

INFORMATION CONSULTANCY SERVICES

Information tailored to special needs of clients can be obtained from the Information Consultancy Service available at ABS Offices (see below).

ABS PRODUCTS

A large number of ABS products is available from the ABS Bookshops (see below). The ABS also provides a subscription service – you can telephone the ABS Subscription Service Australia wide toll free on 1300 3663 23.

ELECTRONIC SERVICES

A large range of data is available via on-line services, diskette, magnetic tape, tape cartridge and CD ROM. For more details about our electronic data services, contact any ABS office (see below) or e-mail us at:

✱ client.services@abs.gov.au

GENERAL SALES AND INQUIRIES

✱ Sydney 02 9268 4611	✱ Adelaide 08 8237 7100
✱ Melbourne 03 9615 7755	✱ Hobart 03 6222 5800
✱ Brisbane 07 3222 6351	✱ Darwin 08 8943 2111
✱ Perth 08 9360 5140	✱ Canberra 02 6252 6627

■ Information Services, ABS
PO Box 10, Belconnen ACT 2616



2340100002985

ISSN 1031-0495

RRP \$16.50